

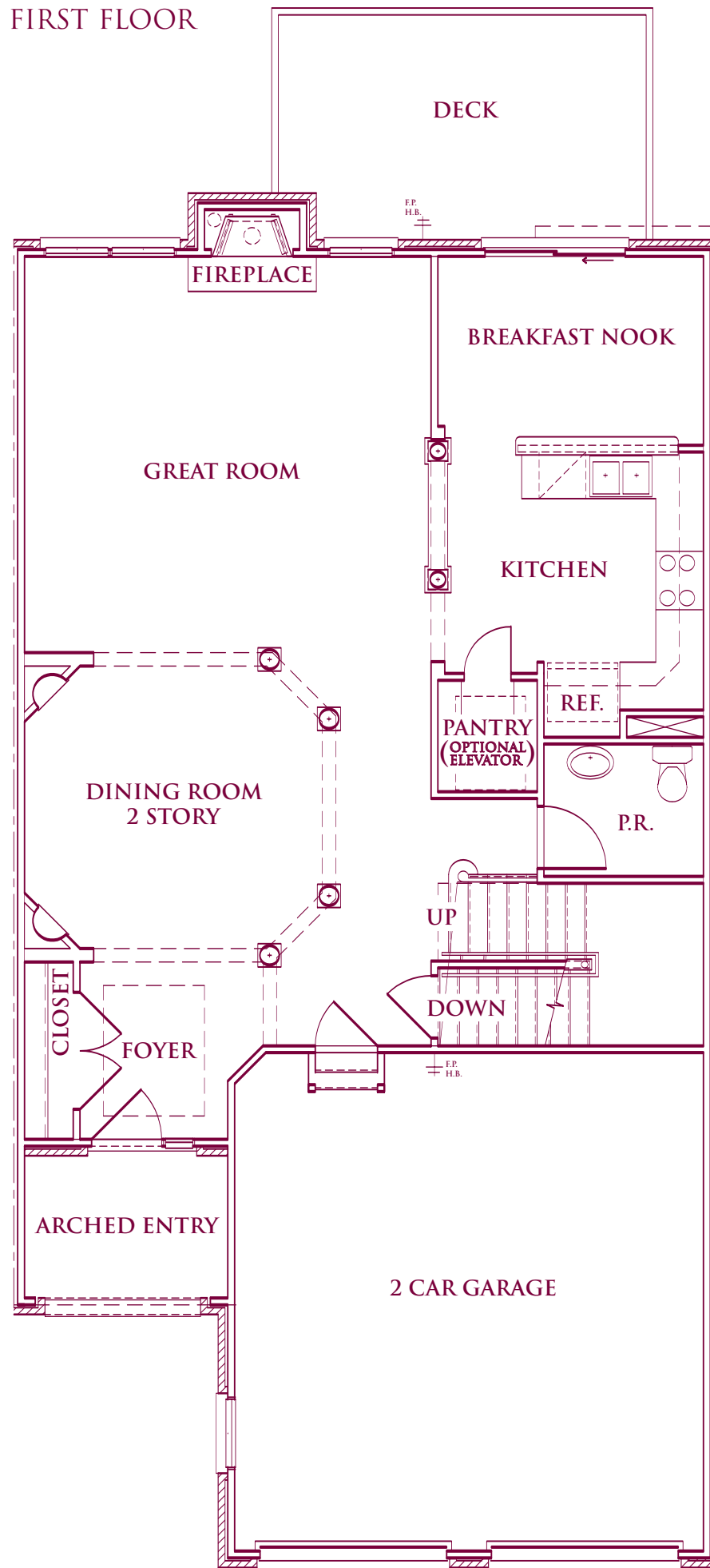
Unit A

THE SUTTON

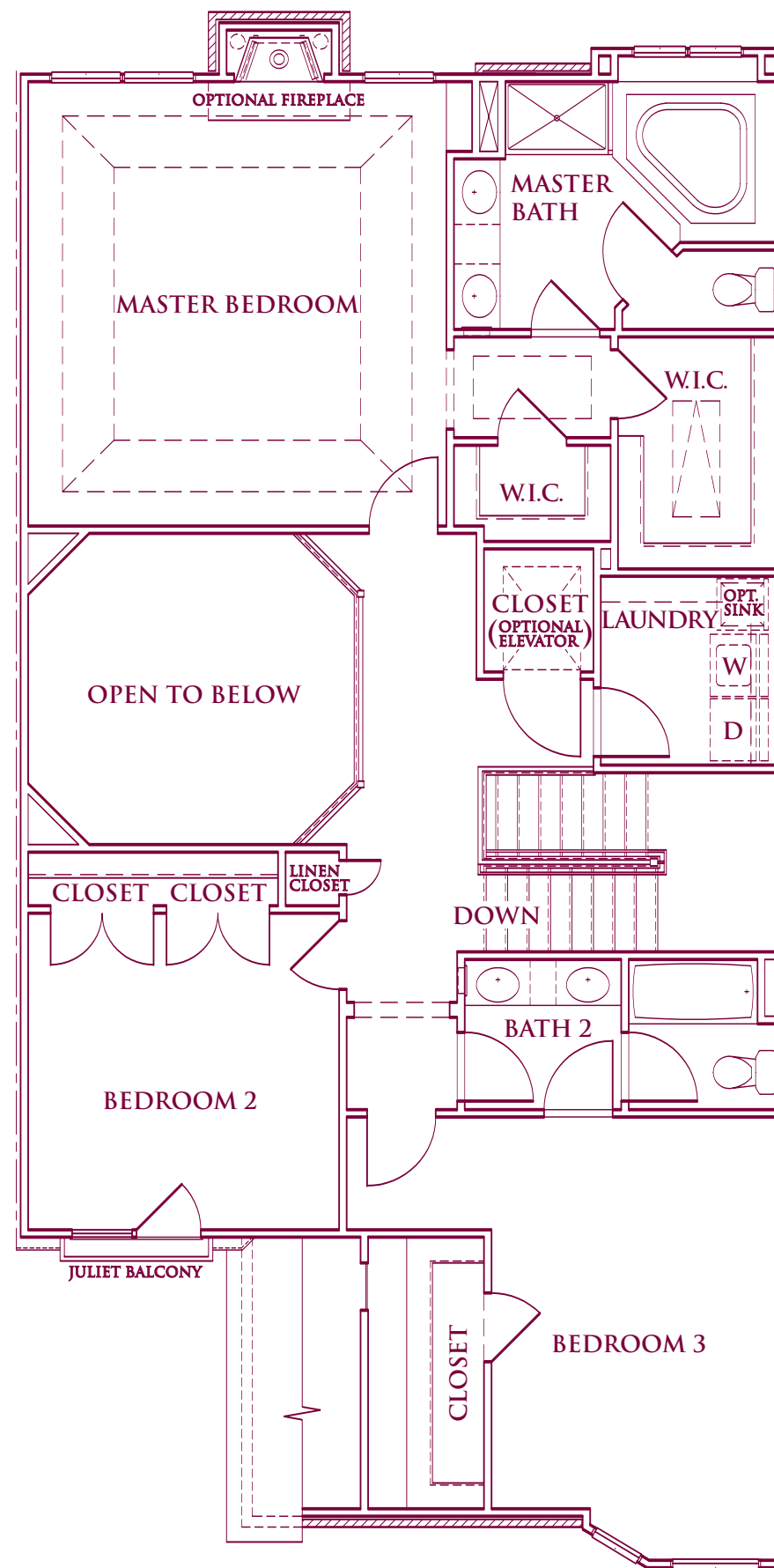


The Sutton's two-level floorplan features elegance in a three bedroom design that is created for everyday living. The Great Room showcases rich feelings of comfort with a sense of genuine sophistication. The bedrooms provide luxury in a relaxed space on the second floor, with many other exciting and tasteful amenities that are featured throughout the home. The optional finished basement extends the feeling of sumptuous and graceful living with a second airy Great Room, an extra bedroom and bathroom and a phenomenal optional temperature controlled Wine Cellar.

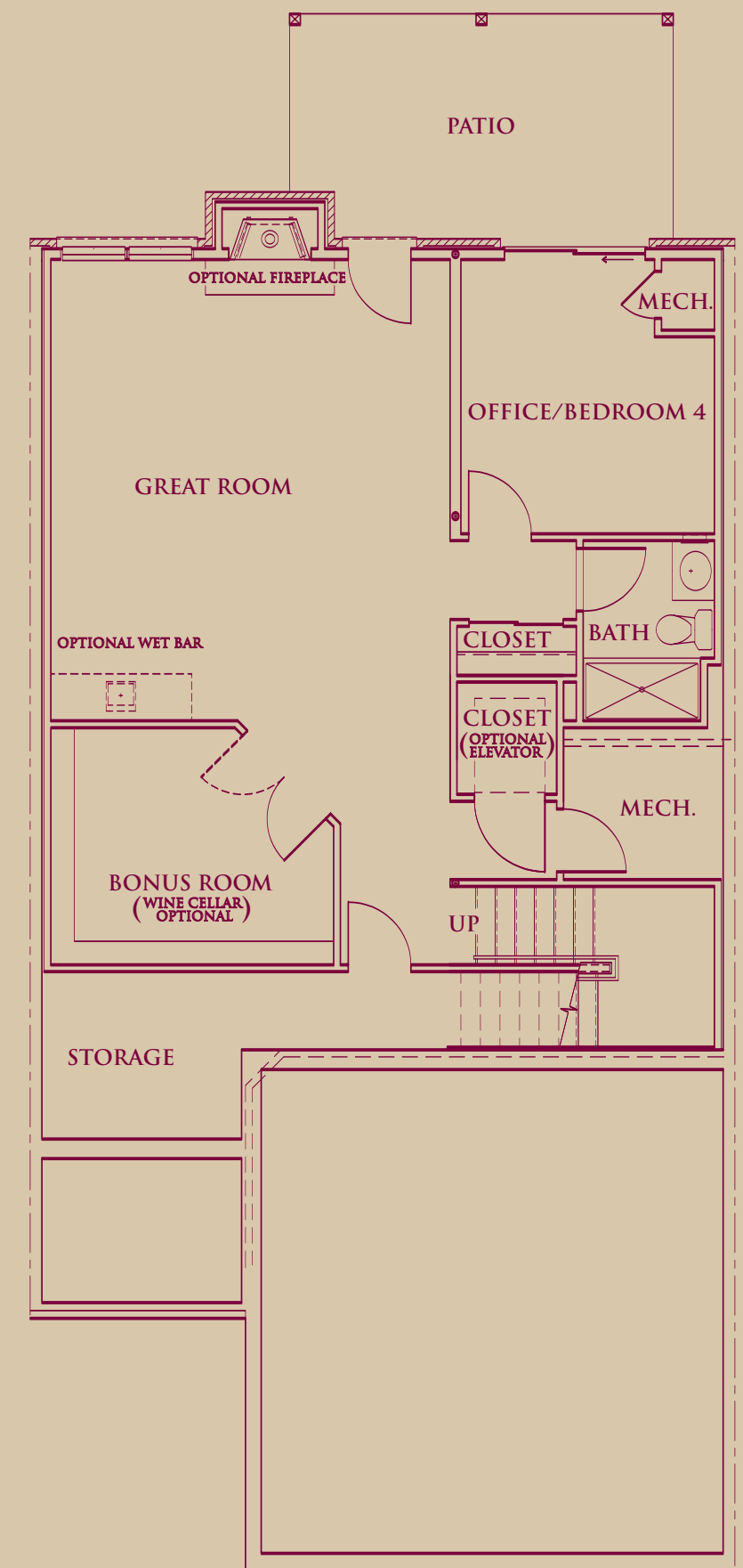
FIRST FLOOR



SECOND FLOOR



OPTIONAL FINISHED BASEMENT



ROOM DIMENSIONS - INSIDE UNIT, MODEL A

FIRST FLOOR

Dining Room - 12'9" X 12'1"
 Great Room - 17'5" X 16'11"
 Kitchen - 11'1" X 9'5"
 Breakfast - 11'4" X 8'1"
 Total Square Footage - 1070'

SECOND FLOOR

Master Bedroom - 16'3" X 17'3"
 Bedroom 2 - 12'1" X 12'3"
 Bedroom 3 - 11'1" X 17'2"
 Total Square Footage - 1313'

OPTIONAL FINISHED BASEMENT

Great Room - 17'0" X 19'7"
 Bedroom 4 - 10'9" X 11'8"
 Bonus Room (Optional Wine Cellar) - 12'0" X 10'1"
 Total Square Footage - 910'

